

# Tree Sale

VOLUME 35, ISSUE 4

2011

Each year the District sells bare root tree, evergreen, shrub seedlings and transplants in an effort to provide energy conservation and/or habitat cover for wildlife.



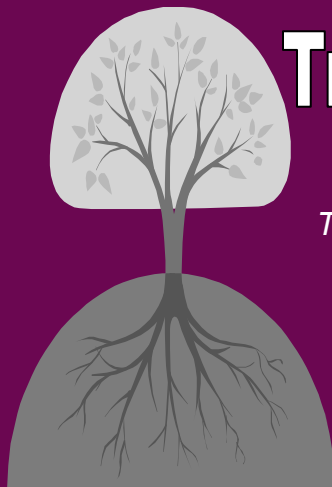
## INFORMATION YOU NEED TO KNOW...

**DEADLINE TO PLACE YOUR ORDER - 3/30/12**

Tree pick up **Thursday, April 19 from 10-6:00 ONLY**

Post cards will be mailed with all the details a week prior to pick-up as your reminder.

Tree brochures can be found at [www.winnebagoSWCD.org](http://www.winnebagoSWCD.org)



## Tree Gift Certificates

*Trees serve as the perfect present for the person who enjoys watching birds and wildlife as well as the long lasting beauty of trees.*

*(certificates must be used for tree sale 2012)*

### Conserving Our Land Today For Tomorrow

The Winnebago County Soil & Water Conservation District is a locally operated unit of government functioning under Illinois Law. Our purpose is to promote the protection, maintenance, improvement, and wise use of the soil, water, and related resources within the District.  
Est. 1940

# EVERGREEN

## SOLD IN BUNDLE SIZES OF

5 - \$9.00      25 - \$38.00      100 - \$130.00

*bundles must be for the same species ONLY*

## EVERGREEN PACKAGE

20 trees - \$34.00

5 each of

White Pine, Colorado Blue Spruce,  
Norway Spruce & Concolor Fir

*\*No Substitutes*

### White Pine (Pinus strobus) H 50 ft W 20-40 ft

Sometimes referred to as the "King of the Northwoods." This fast growing tree grows best in well drained soils, but can survive in a wide range of soil types, with full sun and can tolerate some shade. Produces long soft needles in bundles of five. (2-2)\* 12-18"

### Colorado Blue Spruce (Picea pungens) H 30-60 ft W 10-20 ft

Most popular spruce. Slow to medium growth rate. Prefers moist well drained soils with full sun. This is a dense conical tree with stout, prickly blue-green needles about 1 1/2". Provides wildlife cover. (2-1, 2-2)\* 10-16"

### Concolor Fir (Abies concolor) H 30-50 ft W 15-30 ft

Somewhat similar to the Colorado Blue Spruce in appearance although the needle structure is different. Medium blue in color. Grows best in well-drained soils. Will withstand heat and dryness better than any other fir. Cones are 3-5" and are persistent into the winter. Somewhat shade tolerant. Fast growing. Excellent wildlife cover. (2-1)\* 9-15"

### Norway Spruce (Picea abies) H 50-125 ft W 20-45 ft

This is a pyramidal tree with strong sweeping branches all the way to the ground. Fastest growing member of the spruce family. Does well in a variety of soils and is somewhat shade-tolerant. Great for windbreaks. Provides wildlife cover. (2-1, 2-2)\* 15-24"

### Canadian Hemlock (Tsuga canadensis) H 40-70 ft W 25-35 ft

One of the most beautiful evergreens due to its lacy graceful growth. Can be pruned to maintain desired height. Yellow-green needles in spring changing to a glossy green. Prefers wet or moist soils. Full sun or partial shade. (2-2)\* 12-18"

### American Arborvitae (Thuja occidentalis) H 40-60 ft W 10-15 ft

Dense and has flat green pyramidal leaves, with feather-like, yellowish green needles with blunt tips. Also known as the Northern White Cedar. Medium growth rate. Will do well in moderately moist soils as well as swampy and alkaline soils. Prefers full or 1/2 day sun. Used for windbreaks, hedges, wildlife habitat and as an accent tree. Seeds eaten by various songbirds. Not recommended for windy sites due to susceptibility to windburn. (2-1)\* TR 12-18"

### White Spruce (Picea glauca) H 40-60 ft W 10-20 ft

The needles are 3/4 inches long and are bluish green. Rows of horizontal branches forming a conical crown which will spread fairly wide. The White Spruce produces cones from fall to winter. When planting this tree consider that it needs full sun and well-drained or moist soils. Tolerant to cold and windy situations. Widely used for windbreaks. (2-1)\* 10-16"

The numbers listed after the different species of evergreens are year designations.

The first number equals years in the seedling bed and the second number equals years in the transplant bed.

The total number equals the age of species the tree in years.

The size of the seedling is in inches.

# SHADE TREES

## SOLD IN BUNDLE SIZES OF

5 - \$9.00      25 - \$38.00      100 - \$130.00

*bundles must be for the same species ONLY*

### **Red Maple (Acer rubrum)**    H 40-60 ft    W 30-60 ft

A rapid grower that can adapt to a wide range of soil conditions. Bright red flowers in the spring followed by green leaves. Fall colors vary from yellow to scarlet and is one of the first trees to color in the fall. Performs best in moist, well drained soils. Plant in full sun or light shade. **18-24"**

.....

### **Sugar Maple (Acer saccharum)**    H 50-60 ft    W 40-45 ft

Also known as Scarlet or Swamp Maple. Highly prized because of its bright red flowers in early spring before the leaves appear. Bright green leaves turn brilliant red or orange in the fall. This tree can tolerate wet, swampy soil conditions. Maple syrup from the maple sap can be collected in early spring. Although shade tolerant prefers full sun. **18-24"**

.....

### **Northern Red Oak (Quercus rubra)**    H 50-60 ft    W 40-45 ft

Long lived statuesque shade tree. Large fast growing tree with reddish fall color. Tree is broad and rounded. Excellent for wildlife planting. Broadly rounded crown. Does best in well drained soil and full sun. **18-24"**

.....

### **Black Cherry (Prunus serotina)**    H 40-50 ft    W 30-40 ft

Tree which bears dark green leaves which turn yellow to red in fall and has white flowers which bloom in spring. Also edible fruit in summer. Is a good wildlife species. Pale green berries begin to form in late spring and ripen in summer. Prefers moist fertile soil. Shade tolerant. **18-24"**

.....

### **White Oak (Quercus alba)**    H 45-50 ft    W 35-50 ft

State tree of Illinois. Picturesque tree with dense foliage that is bluish green to reddish brown in autumn. Grows best in a deep, loamy, well drained soil. Prefers sun. The White Oak is a long lived tree and require very little maintenance. Acorns eaten by turkey, blue jay and squirrel. **18-24"**

.....

### **Burr Oak (Quercus macrocarpa)**    H/W 50-60 ft

Does well in a variety of soil conditions. Noted for its corky branches. Leaf color is dark green in summer and yellow to yellowish brown in the fall. Provides food & shelter for wildlife. Largest acorns of all Oaks. Shade tolerant. **18-24"**

.....

### **River Birch (Betula nigra)**    H/W 30-40 ft

Tolerant to many soil conditions. Reddish brown exfoliating bark. (Resistant to bronze birch borer). Leaves are long and oval shaped with serrated edges which are green above and whitish underneath. Full sun. **18-24"**

.....

### **Chokecherry (Prunus virginiana)**    H 20-30 ft    W 15-20 ft

Bears small white flowers in late April - May. Fruit is red and turns dark purple; it is used in making jellies, pies and wine. Easy to grow in a variety of soils. Small upright tree. Drought and heat resistant. **12-18"**

# SHRUBS

## SOLD IN BUNDLE SIZES OF

5 - \$9.00      25 - \$38.00      100 - \$130.00

*bundles must be for the same species ONLY*

## SHRUB PACKAGE

9 trees - \$17.00

3 each of

Common Lilac, Silky Dogwood &  
Juneberry Serviceberry

*\*No Substitutes*

### **Common Lilac (*Syringa vulgaris*)** H 8-15 ft W 6-12 ft

Forms perfect hedge or screen. Provides good cover for many birds and mammals. It's light, purplish flowers bring beauty and a sense of nostalgia to all who stop to enjoy their fragrance. Has broad oval leaves. This large and vigorous shrub does best in sunny well drained locations. **18-24"**

### **Black Chokeberry (*Aronia melanocarpa*)** H 3-5 ft W 4-8 ft

Very adaptable shrub with blackish purple fruit and wine red to purplish black fall color. Showy flowers and fruit. Blooms in early spring, before the leaves appear. Turns red in the fall. Full sun to partial shade. Multi seasonal due to flowers and high-quality summer foliage. **12-18"**

### **American Hazelnut (*Corylus americana*)** H/W 8-16 ft

Commonly called the American filbert. Rounded, multi-stemmed tree/shrub that occurs in dry or moist thickets, woodlands, wood margins, valleys, uplands and prairies. In spring, male flowers appear in showy, 2-3" long, yellowish brown catkins and female flowers appear in small, reddish, inconspicuous catkins. Hazelnut trees produce small, egg-shaped, 1/2" long, edible nuts (maturing July-August) which are encased in a leafy, husk-like form. The fall color is quite variable, ranging from attractive combinations of orange, rose, purplish red, yellow and green to yellowish green. Wildlife relish the nuts. Does best in full to part sun. Will grow in a variety of soils. **12-18"**

### **Juneberry Serviceberry (*Amelanchier alnifolia*)** H/W 4-6 ft

Also known as Saskatoon. Small to medium suckering shrub that bears clusters of fragrant creamy white flowers followed by edible fruit in June - July. Turning to orange and red in the fall. Does best in full sun but will tolerate partial shade. Extremely adaptable shrub will grow in a variety of soils.

~~12-18"~~ **6-12"**      **5 - \$7.00**      **25 - \$30.00**

### **Silky Dogwood (*Cornus amomum*)** H-W 6-10 ft

Clusters of small white flowers appear in late spring or early summer. A favorite among butterflies. Berries are a pale blue with foliage turning a deep red in fall. Performs best in soils that are moist. Highly tolerant to shade. **12-18"**

### **Common Witchhazel (*Hamamelis virginiana*)** H/W 15-20 ft

Splendid spider like yellow fall color and very fragrant flowers that bloom in October - November. Tall shrub with upright spreading branches. A favorite to migrating hummingbirds. Prefers full sun to partial shade. Prefers a moist, cool and acidic soil. **12-18"**

### **Pagoda Dogwood (*Cornus alternifolia*)** H/W 25-35 ft

Bears extremely fragrant yellowish white flowers in the spring. Flowers followed by berries that gradually change from green to red to blue black on red stalks. These berries are a valuable food for birds and other wildlife. Leaves turn to a beautiful reddish-purple before they drop in the autumn. Plant in cool, moist acidic soils. Partial shade is ideal for this shrub. **12-18"**

DEADLINE TO  
ORDER  
March 30, 2012

# ORDER FORM

NAME: \_\_\_\_\_

ADDRESS: \_\_\_\_\_

CITY: \_\_\_\_\_ STATE: \_\_\_\_\_ ZIP: \_\_\_\_\_

EMAIL: \_\_\_\_\_

PHONE: (\_\_\_\_) \_\_\_\_\_

	SPECIES/SPECIALTY ITEMS	PRICE	QUANTITY	SUBTOTAL
office use only				

## PAYMENT INFORMATION

☐

Cash

☐

Check (made payable to: Winnebago County SWCD)

☐☐☐

\$ TOTAL

no sales tax

send order to:

Winnebago County SWCD

4833 Owen Center Rd.

Rockford, IL 61101-6007

(815) 965-2392, x3 ~ FAX (815) 965-2447

Credit Card #: \_\_\_\_\_

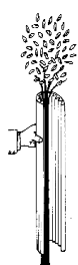
Exp. Date:

Signature: \_\_\_\_\_

(CSC) card security code:

# SPECIALTY ITEMS

**Tree Mats (5 mats w/staples) - \$6.25** - each mat gives 9 square feet of weed free soil, covered with more than 400 tiny funnel-shaped holes, which allows almost every drop of water thru to the soil.



**Tree protectors** provide tree protection from wind and wildlife damage to increase growth and lower maintenance costs. Protectors are corrugated, so it is easier to form a circle around the tree and to thread the lock ties through the holes. Tree protectors should not be used on evergreens or shrubs. Protectors are designed to be used on hardwood trees only.

**36" Tree Protector - \$2.00**

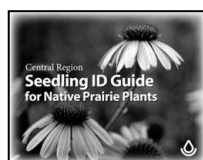
**36" Tree Protector w/ stake - \$3.00**

**48" Tree Protector - \$2.50**

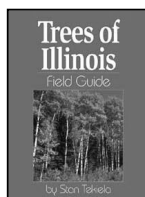
**48" Tree Protector w/ stake - \$3.75**

**Fertilizer Packets - 5 - \$2.50, 25 - \$11.00, 100 - \$40.00** - biodegradable, contain 10 essential nutrients that new seedlings need to get off to a great start. Packets be placed in hole when you are planting the seedling. Nutrients are released slowly during the first twelve months right when the seedling needs them.

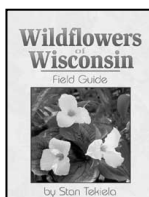
**Conservation Books** - these guides have detailed photos and drawings to help you identify several common native plants and wildlife. Field guides can help students complete school assignments and they also make great gifts.



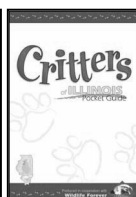
**\$7.00**



**\$14.00**



**\$16.00**



**\$6.00**



**\$13.00**

**Rain Barrels (55 gal) - black, terra cotta, blue or grey - \$70.00** - reconditioned plastic food grade barrels, fitted with a screw-on mesh lid, spigot and bottom drain plug



**Composters (55 gal) - \$120.00** - elevated composter with recycled components; including a pre-used black barrel and 100% recycled lumber painted with water based exterior latex paint, approx. 4', requires a 3' x 4' area

**Automatic Diverter - \$25.00** - directs water back into downspout when barrel is full

**Pedestal - \$25.00** - wooden frame pedestal raises rain barrel off of the ground

**Linking Hose - \$10.00** - used to attach multiple barrels together

**Downspout Adapter - brown or white - \$5.00** - attaches to downspout to direct rain water into barrel

# **"Horizons" Sponsors – 2011**

The following businesses are sponsoring your Soil and Water Conservation District "Horizons".



## **NORTHERN ILLINOIS TRACTOR & EQUIPMENT NITE**

**NEW & USED FARM EQUIPMENT, TRUCKS & TRAILERS**  
Utility, Car Hauling, Horse, Cargo & Construction  
Visit us on the Internet at: [www.NiteEquip.com](http://www.NiteEquip.com)

Jerry Sacia – Owner  
2388 Conger Road  
Pecatonica, IL 61063

Phone: 815-239-9096  
Fax: 815-239-9032  
email: [sales@NiteEquip.com](mailto:sales@NiteEquip.com)

## **WINNEBAGO COUNTY FARM BUREAU**

*"Where Membership Means Value"*

Roger Christin, Manager  
1925 S. Meridian Road  
Rockford, IL 61102  
(815) 962-0653

## **Durand State Bank**



1005 Cameron Drive  
P.O. Box 537  
Durand, IL 61024  
815-248-2101

[www.durandstatebank.com](http://www.durandstatebank.com)

13697 Best Road  
Davis, IL 61019  
815-248-2711

## **Wishop Tile & Drainage**

Tile Systems  
Drainage Concerns  
Commercial  
Waterway Projects

Better Drainage ... Better Yields.  
**815-629-2688**

## **DEWEY HESLOP TRUCKING & EXCAVATING**

*"Work done to your satisfaction since 1965"*

Backhoe/Trackhoe/Grader/Skid-Loader/Catwork/Black Dirt/  
Waterways/Landscaping/Fence Rows Cleaned/Road Stone

**Pecatonica**  
**815-968-8546**

## **BULL's Well Drilling**

*Well Drilling & Pump Service*

**ROCKFORD**  
**815-962-0111**

## **LUDEWIG DRAINAGE**

KENNETH C. LUDEWIG  
Owner

12604 Haldane Rd.  
Polo, Illinois 61064

Bus.: (815) 938-3304  
Res.: (815) 938-2543  
Cell: (815) 266-4820

**Contact the District to become a  
2012 "Horizons" sponsor**

An amendment to the Soil & Water Conservation Districts Act (Section 22.05) requires the following statement:  
"These plants are for conservation purposes only and shall not be used as ornamentals or for landscaping.



All proceeds generated from the SWCD tree sale go to continuing conservation efforts in the Winnebago County Soil & Water Conservation District.  
The District cannot accept responsibility for size or viability of trees. Size and description are as stated by the nursery.

All Winnebago County Soil and Water Conservation District and Natural Resource Conservation Service programs and services are offered on a nondiscriminatory basis without regard to race, color, national origin, religion, sex, age, marital status or handicap. The Winnebago County SWCD operates in accordance with the USDA policy. Any person who believes he or she has been discriminated against should write to the Secretary of Agriculture, Washington D.C. 20250.

**WINNEBAGO COUNTY SWCD**  
4833 Owen Center Road  
Rockford, IL 61101-6007  
Phone: (815) 965-2392, Ext. 3  
Fax: (815) 965-2447  
[www.winnebago-swcd.org](http://www.winnebago-swcd.org)  
**Office Hours**  
Monday - Friday  
8:00 a.m. - 4:30



NON-PROFIT  
U.S. POSTAGE PAID  
Permit No. 17  
Rockton, IL 61072